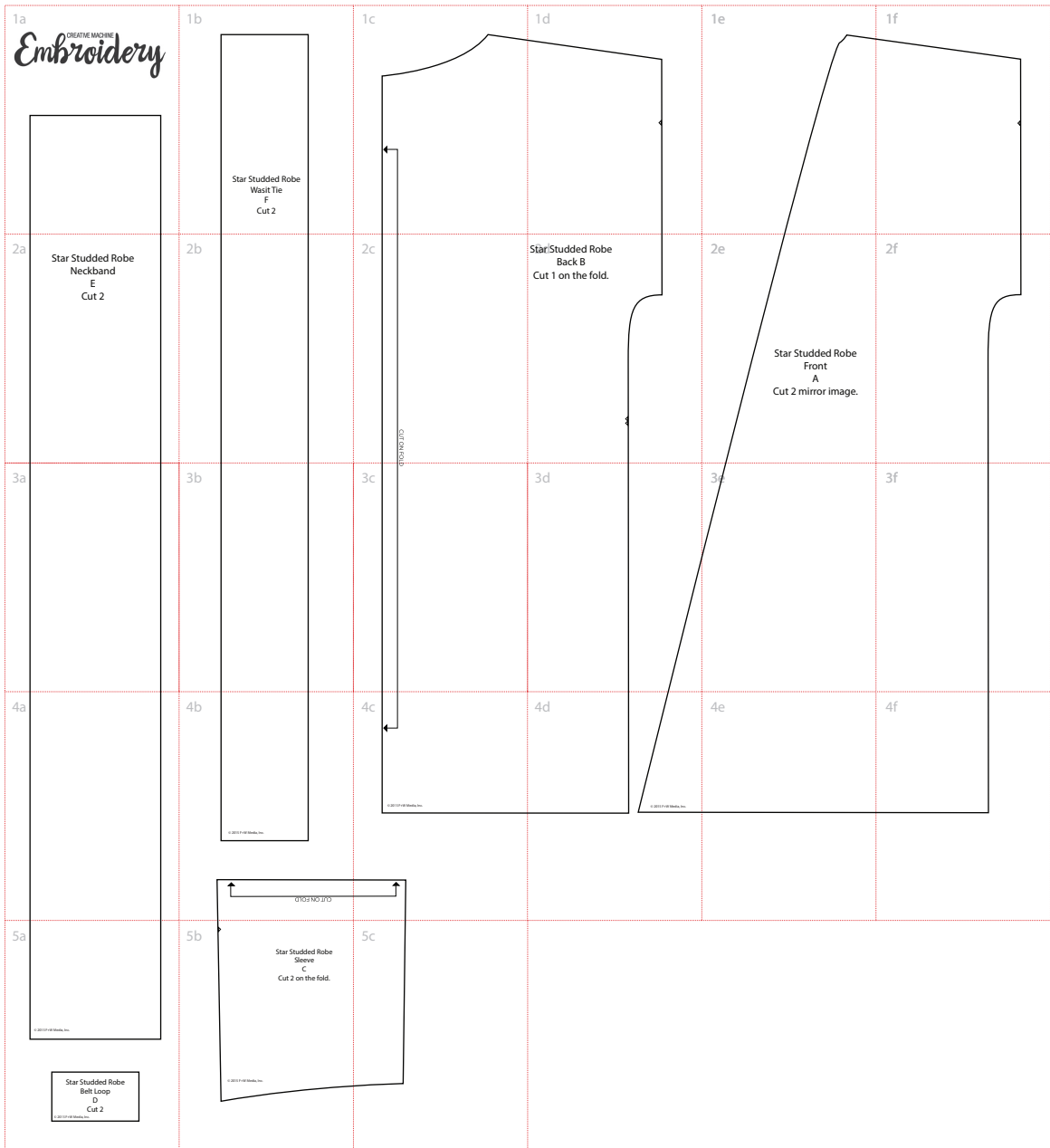
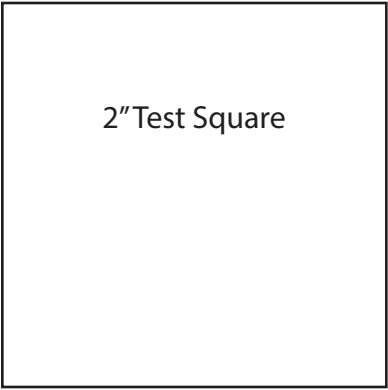
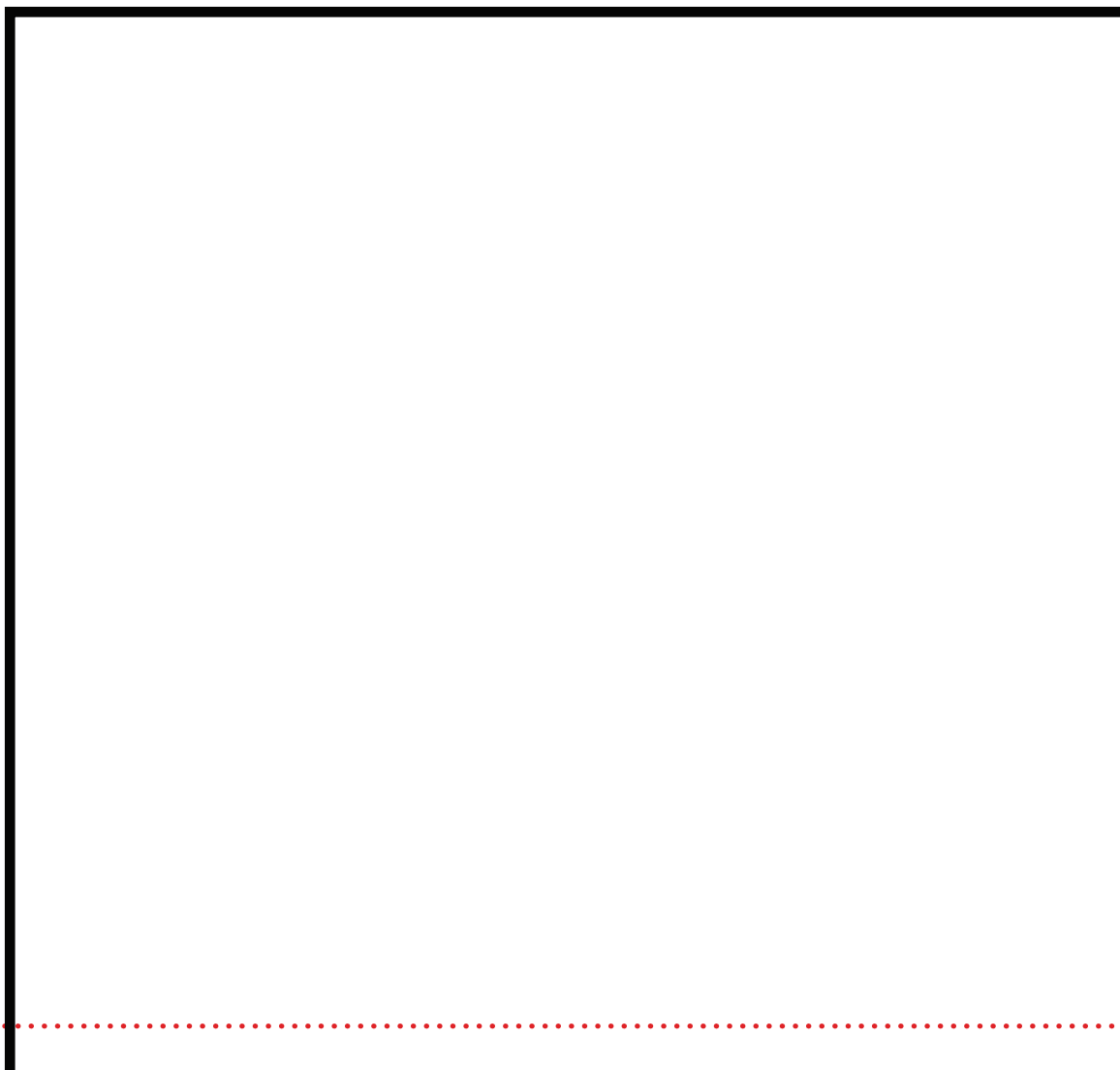


Star Studed Robe ePattern Layout  
 Twenty Seven: 1a-1f, 2a-2f, 3a-3f, 4a-4f, 5a-5c  
 Print this page first at 100%,  
 then measure test square before  
 printing full pattern



1a

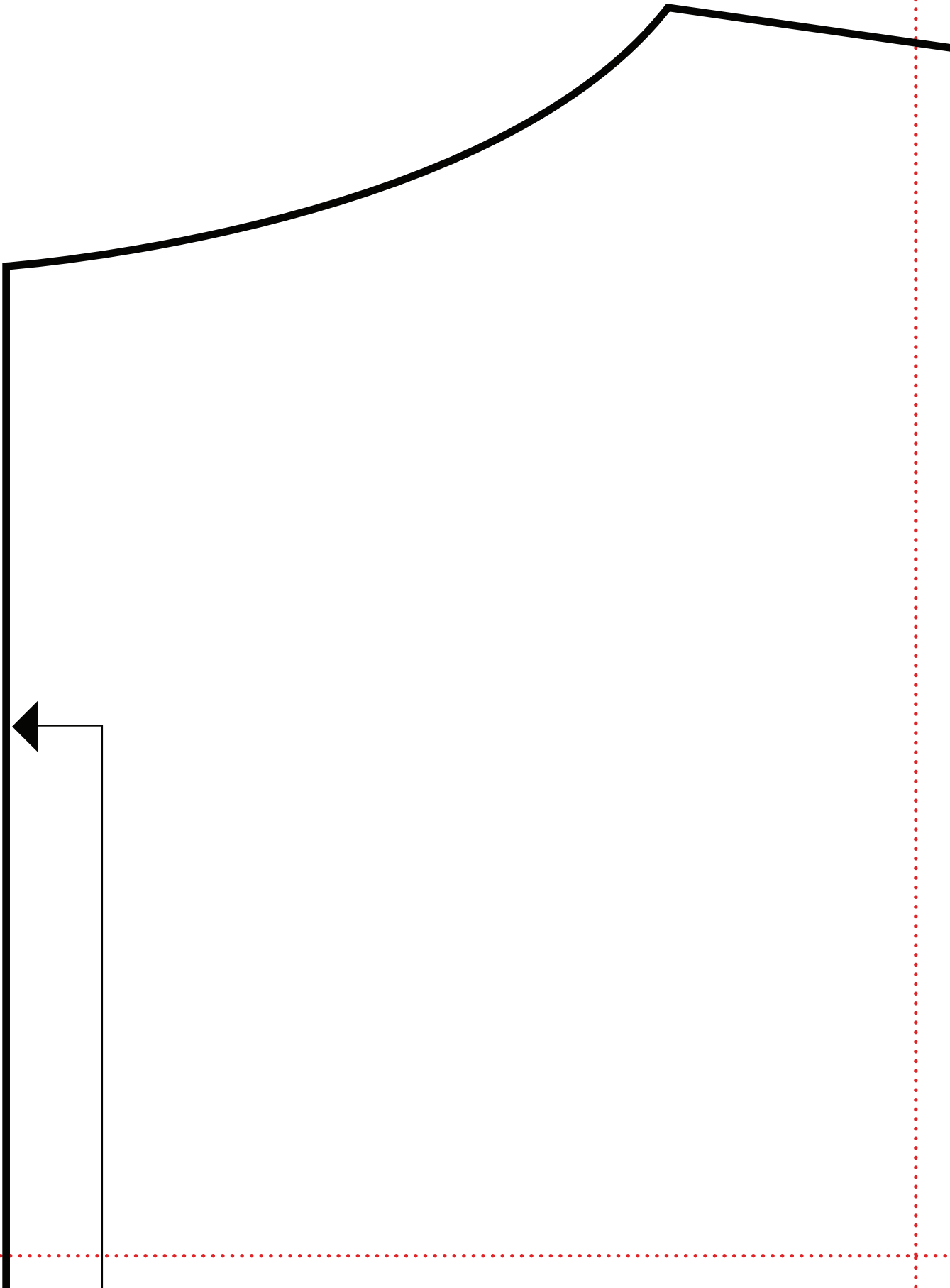
CREATIVE MACHINE  
*Embroidery*



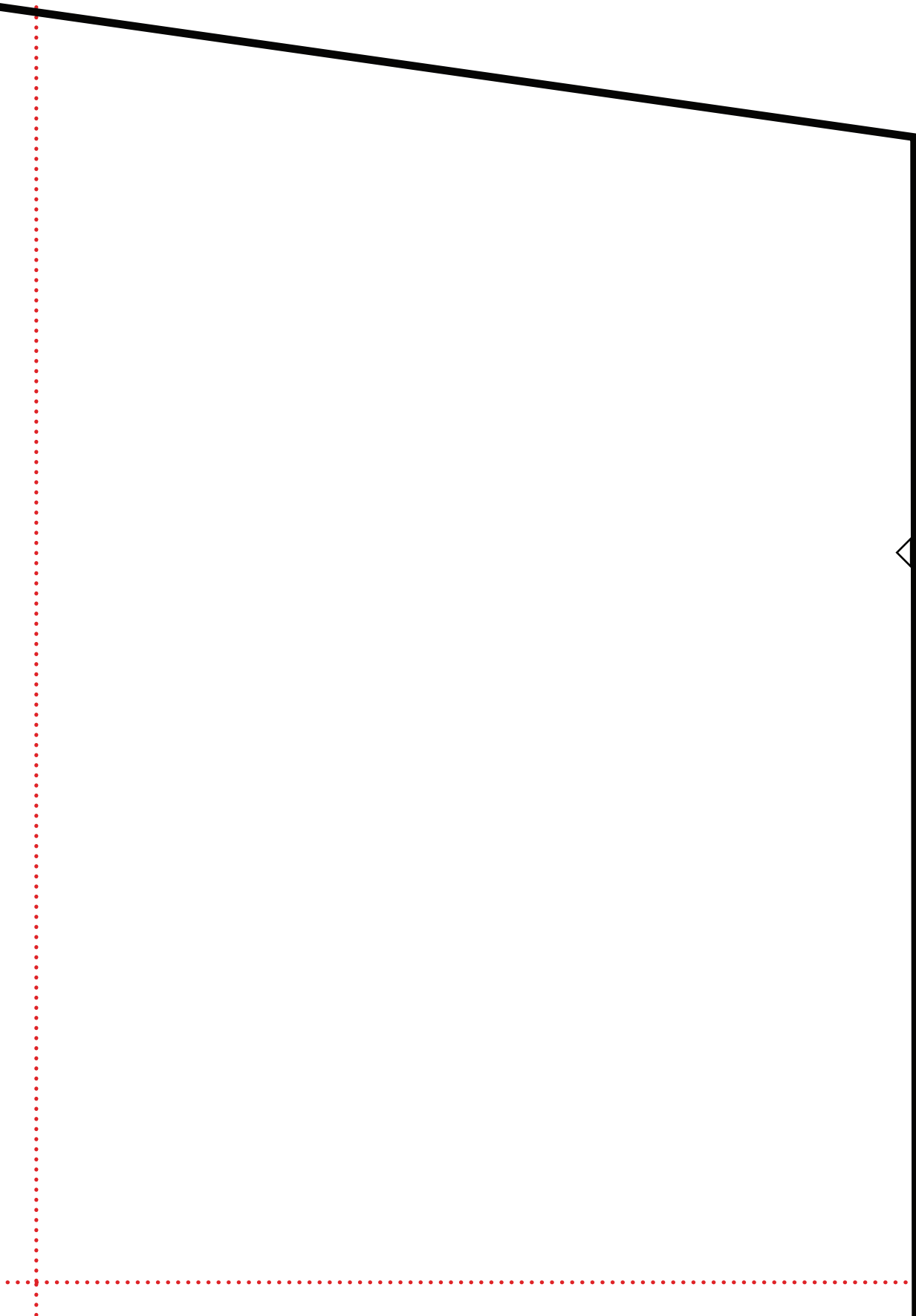
1b

Star Studded Robe  
Wasit Tie  
F  
Cut 2

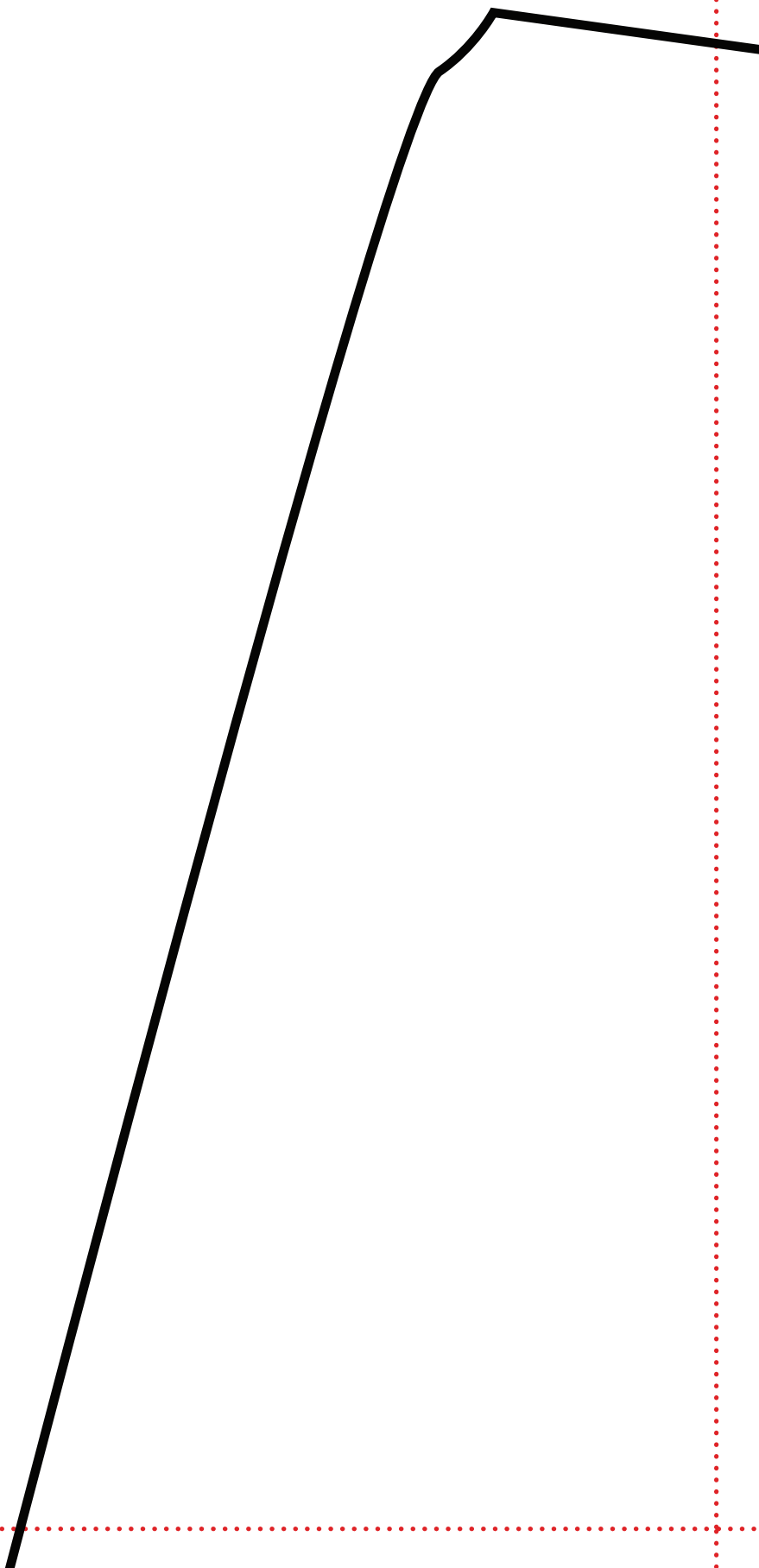
1c



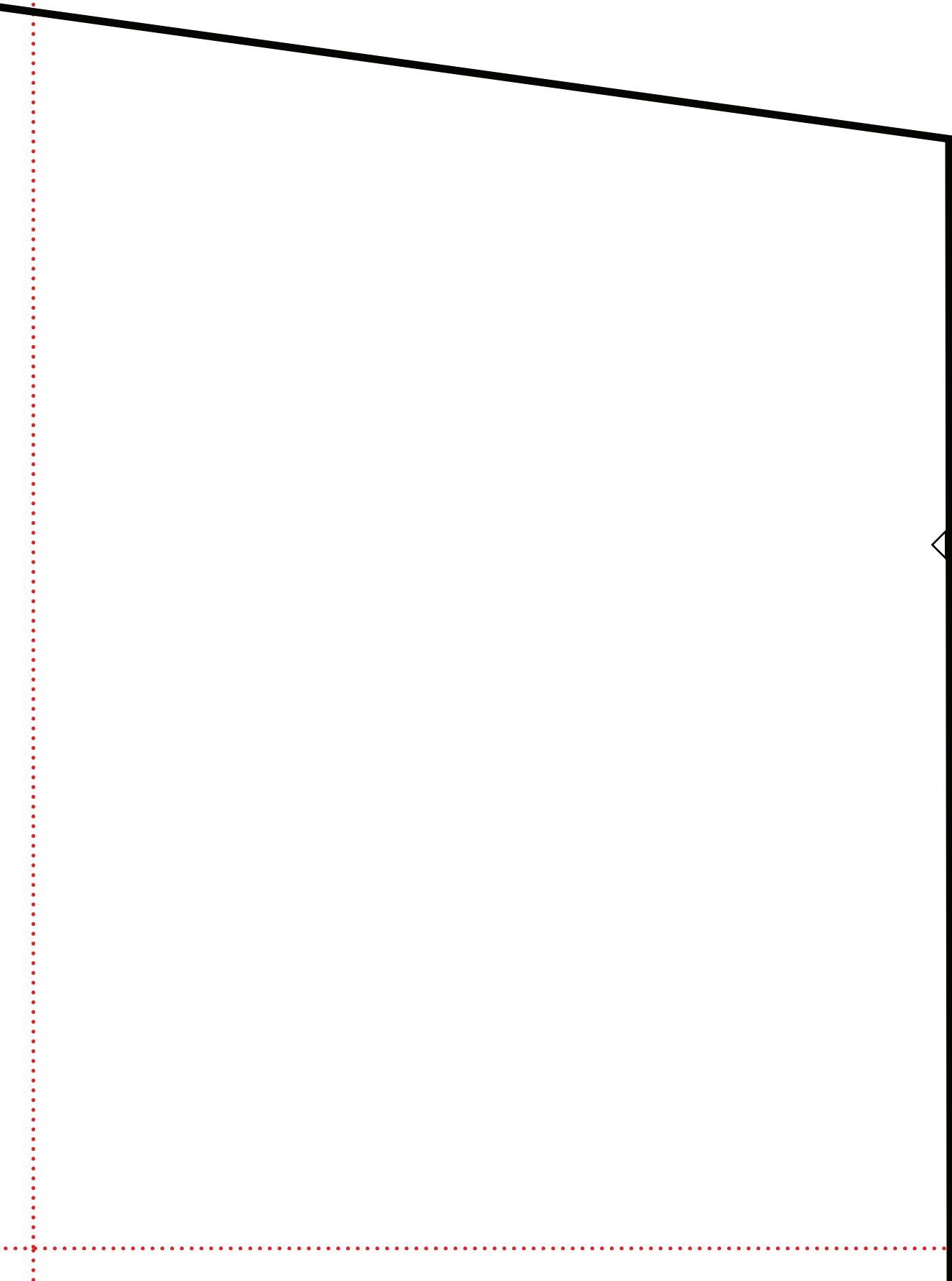
1d



1e



1f



2a

Star Studded Robe  
Neckband  
E  
Cut 2



2b

2c

CUT ON FOLD

9

2d Star Studded Robe

Back B

Cut 1 on the fold.

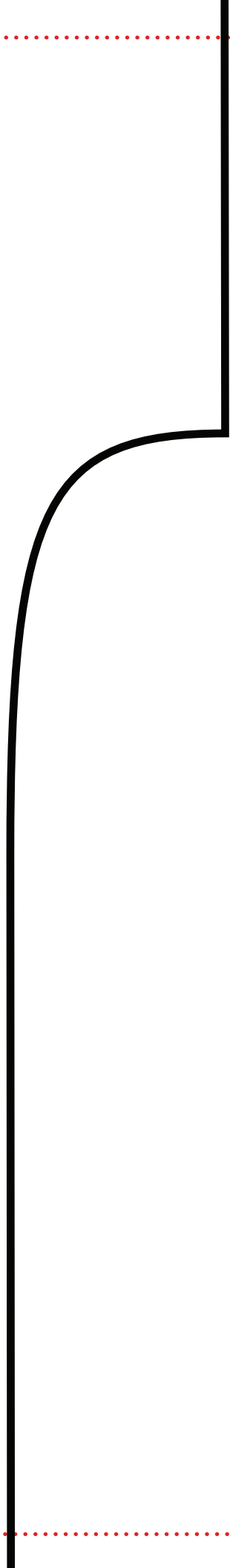


2e

Star Studded Robe  
Front  
A

Cut 2 mirror image.

2f



3a

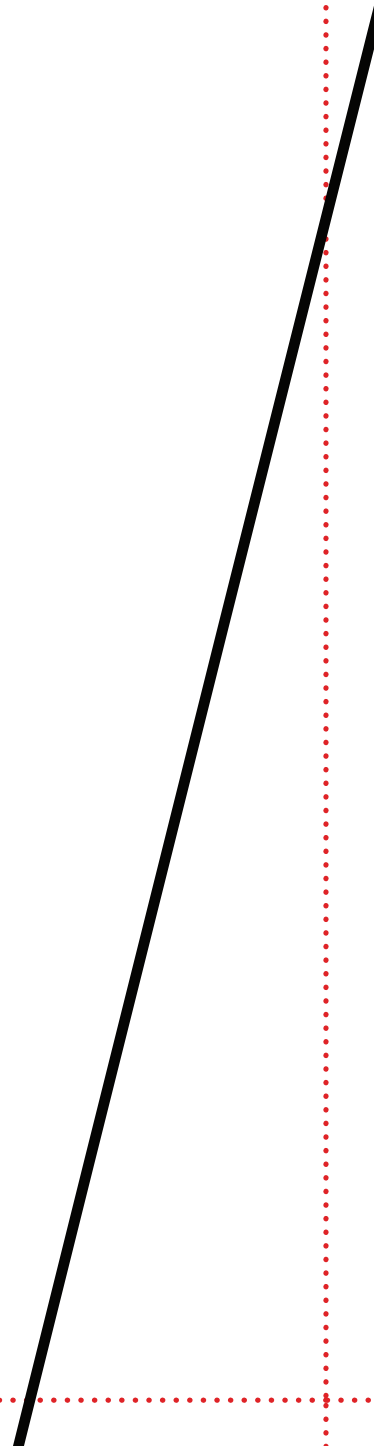
3b

3c

OLD



3d



3e

3f

4a

4b

© 2015 F+W Media, Inc.

CUT ON FOLD



4c



© 2015 F+W Media, Inc.



4d

© 2015 F+W Media, Inc.

4e



4f

5a

© 2015 F+W Media, Inc.

Star Studded Robe  
Belt Loop  
D  
Cut 2

© 2015 F+W Media, Inc.

5b

Star Studded Robe  
Sleeve

C

Cut 2 on the fold.

© 2015 F+W Media, Inc.

5c