

Toasty Toes

by Sue Barnabee

Warm your toes and add holiday cheer with festive fleece socks. Vary the embroidery designs to match the personalities of those on your gift giving list.



SHOPPING LIST

- ½ yard of fleece
- slippers pattern (such as Green Pepper #527 Polar Slippers)
- cut-away stabilizer
- tear-away topper
- embroidery software
- coordinating polyester embroidery thread
- temporary spray adhesive
- chalk marker
- embroidery designs

Getting Started

- Select embroidery designs that are less dense, and test-stitch them on pieces of scrap fabric before embroidering on the intended fabric.
- Choose fleece fabric with a crosswise stretch to allow for proper fit. Trace the pattern for the desired foot size on the fleece wrong side using a chalk marker. Allow an extra ¼" of fabric along the toe and heel. Transfer all pattern marks onto the fleece.

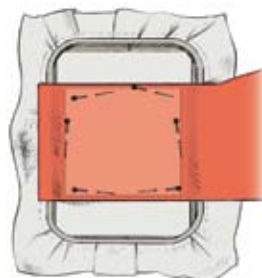
Embroidery

- To embroider the sock cuff, use software to resize the chosen design to approximately 1.5"x3.87", making sure the design size is appropriate for the sock size. Use the mirror-image function to invert the design for the second sock. Adjust the design size to fit within the cuff dimensions leaving ½" of fabric free along the cuff upper and lower edges. Mark the design center using a pin **(A)**.
- Hoop a piece of stabilizer and attach one sock using temporary spray adhesive; pin.
- Position the tear-away topper over the sock to prevent the design from sinking into the fabric nap and to eliminate the fleece from seeping through the design; pin **(B)**.
- Embroider the design. Once the embroidery is complete, tear away the topper and cut away the stabilizer under the fabric. Repeat to embroider the second sock.
- To embroider the sock foot, use software to resize the design to approximately 2½"x2". Use the mirror-image function to invert the design. Center the design 2½" from the sock lower edge **(C)**. Embroider each sock, repeating the steps for the embroidered cuff version.

A Mark design center using pin.



B Pin tear-away topper perimeter over fleece to secure.



C Center design 2½" from sock lower edge.



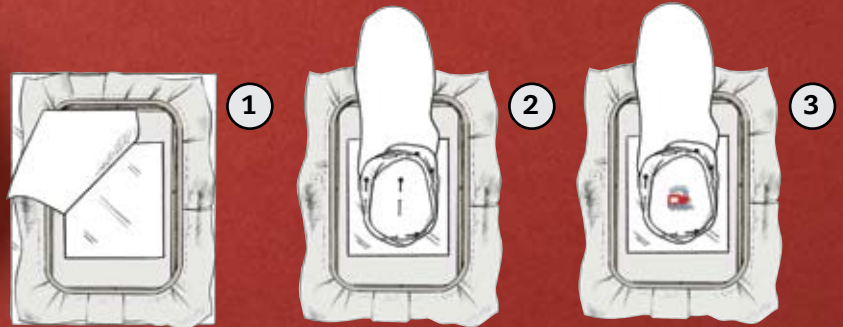
Green Pepper
#527, Polar
Slippers



Cuff Stuff

Embroidering ready-made sock cuffs is challenging. It's difficult to stabilize such a small area, and the needle is easily caught on the excess fabric. Here are a few pointers to make embroidering socks a trouble-free experience:

- Hoop a piece of paper-release adhesive stabilizer.
- Score the paper and tear away a square inside the hoop edges, exposing the adhesive (1).
- Turn the sock wrong side out; attach the cuff to the adhesive with the design center pin mark centered in the hoop. Pin the excess cuff and sock fabric away from the design area (2).
- Embroider the design (3).
- Cut away the stabilizer; turn the sock right side out. Fold the cuff to the sock right side.



Construction

- Follow the pattern instructions to construct the socks. Use a narrow zigzag stitch and slightly stretch the fabric while sewing. ■

DESIGNS

Snowman designs: Snow Lady Designs, Snow Place Like Home; (281) 382-1440, snowladydesigns.com
Train: Perfect Little Stitches, ¾" Teeny Baby Mini Designs; perfectlittlestitches.com

SOURCES

The Green Pepper, Inc. provided the Polar Slippers Pattern (#527); (800) 767-5684, thegreenpepper.com.
Hoop-It-All, Inc. provided the Dry Cover-Up tear-away topper; (800) 947-4911, hoopitall.com.
Krause Publications provided *Embroidery Machine Essentials - Fleece Techniques: Jeanine Twigg's Companion Project Series #2* by Nancy Cornwell; (800) 258-0929, krausebooks.com.
Sulky of America provided the embroidery thread and cut-away stabilizer; (800) 874-4115, sulky.com.